



# FORTUNE CONNEX

PROPERTY SOLUTIONS



## 502/161 Epping Road Macquarie Park NSW

1 1

Located in the sought-after Project Parkside, facing the quiet side not the main street, this modern light one-bedroom apartment offers a smart layout, quality finishes, and unbeatable convenience. Just 10 minutes walk to Macquarie Centre, Metro station, and 3 minutes walk to university, this near new very affordable one bedroom apartment is perfect for first home buyers or savvy investors seeking strong rental demand and long-term growth.

? Open-plan living with balcony

? North Facing, nothing to block the front view, quiet facing, not facing Epping Rd

**Type** : Apartment

**Price** : \$ 605,000

**View** : <https://www.fortuneconnex.com.au/sale/nsw/north-hern-suburbs/macquarie-park/residential/apartment/8637504>



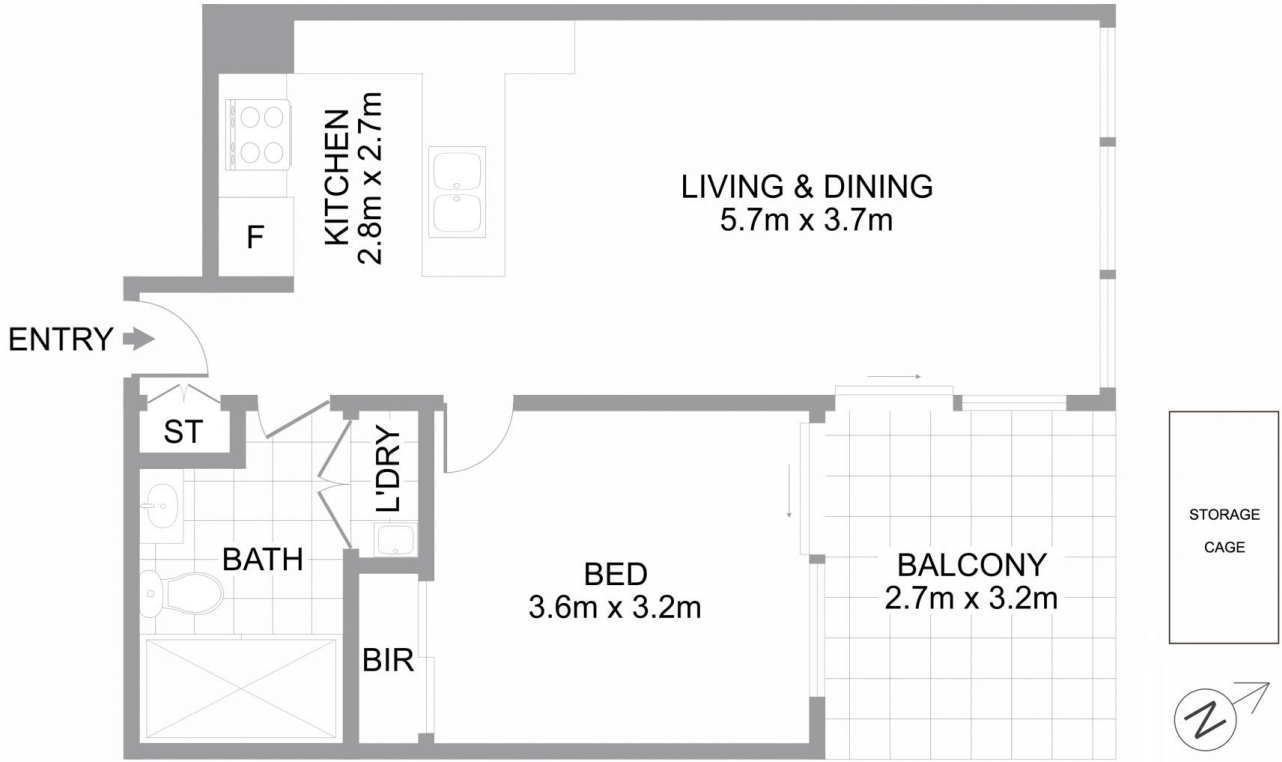
**Sophia(Huichun) Su**  
0480 100 267



**Yan Wang**  
0452665926

[For full version visit the website](https://www.fortuneconnex.com.au)

<https://www.fortuneconnex.com.au>



## 502/161 Epping Rd, Macquarie

The information provided on this floor plan is shown for presentation purposes only and are not part of any legal document or title. They are subject to errors, omissions, inaccuracies and should not be used as a sole and accurate reference. Interested parties should make their own inquiries using independent sources.



**FORTUNE CONNEX**  
PROPERTY SOLUTIONS