

# FORTUNE CONNEX

PROPERTY SOLUTIONS



## 2409/1 Brushbox Street Sydney Olympic Park NSW

1 1 1

Set in the heart of Sydney Olympic Park, this stylish and vibrant apartment sits high on the 24th floor of one of the area's most iconic towers. Surrounded by world-class entertainment and recreational facilities, this is your chance to live above it all.

Come New Year's Eve, enjoy Sydney's famous fireworks from the comfort of your own private balcony. Offering breathtaking panoramic views and a sleek, contemporary lifestyle, this home perfectly combines natural beauty with urban convenience. With major infrastructure projects such as Metro West and the upcoming Light Rail underway, this location promises even greater connectivity and long-term value.

**Type** : Apartment

**View** : <https://www.fortuneconnex.com.au/sale/nsw/inner-west/sydney-olympic-park/residential/apartment/8556974>



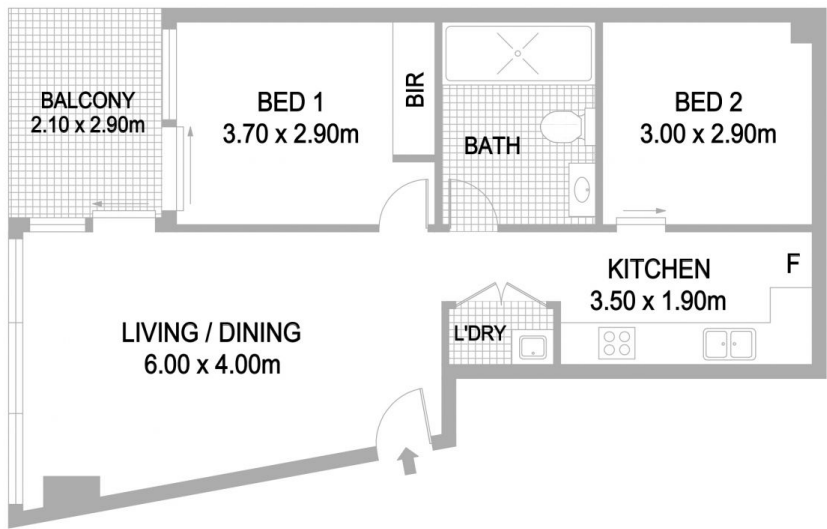
**Jack(Zhentong) Lin**  
0491968645



**Eddie(Tianxiang) He**  
0421 887 783

[For full version visit the website](https://www.fortuneconnex.com.au)

<https://www.fortuneconnex.com.au>



STORAGE CAGE



CAR SPACE  
2.50 x 5.50m



2409/1 Brushbox St, Sydney Olympic Park

Disclaimer:  
The information provided on this floor plan is shown for presentation purposes only and are not part of any legal document or title.  
They are subject to errors, omissions, inaccuracies and should not be used as a sole and accurate reference.  
Interested parties should make their own inquiries using independent sources.



**FORTUNE CONNEX**  
PROPERTY SOLUTIONS