



FORTUNE CONNEX

PROPERTY SOLUTIONS



22 Ansell Street Marsden Park NSW

4 2 1

Fortune Connex proudly presents this spacious two-story home with excellent quality throughout. This home features a highly functional floor plan that seamlessly connects throughout the property, maximizing the flow of natural light.

Located just minutes from local shops and within walking distance to the Northbourne Public School, this home truly has it all. Don't miss out on the opportunity to make it yours!

Property Features:

- ? 4 generous bedrooms, one of which can be used as an additional living room
- ? Ground floor one bedroom with a full bathroom including

[For full version visit the website](https://www.fortuneconnex.com.au)

Type : House

Price : \$ 1,150,000

View : <https://www.fortuneconnex.com.au/sale/nsw/western-sydney/marsden-park/residential/house/8509720>



Sophia(Huichun) Su
0480 100 267

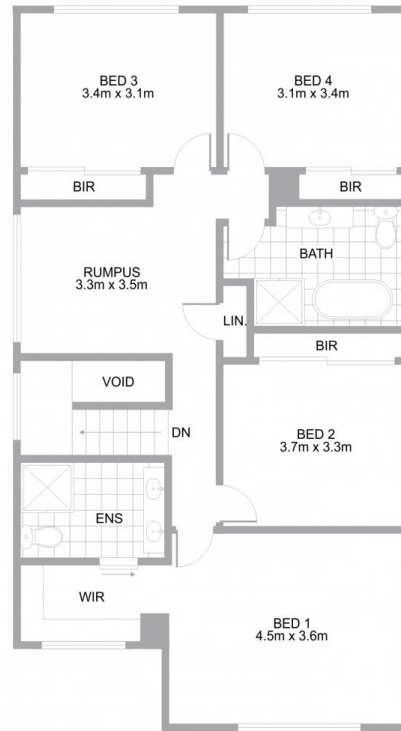


Robin(Rubing) Yan
0451 787 774

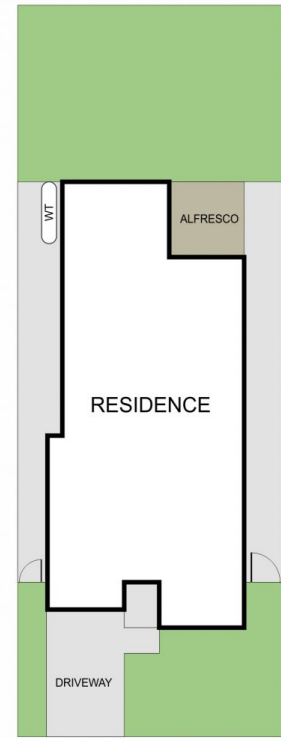
<https://www.fortuneconnex.com.au>



Ground Floor



First Floor



Site Plan



22 Ansell St, Marsden Park

The information provided on this floor plan is shown for presentation purposes only and are not part of any legal document or title. They are subject to errors, omissions, inaccuracies and should not be used as a sole and accurate reference. Interested parties should make their own inquiries using independent sources.



FORTUNE CONNEX
PROPERTY SOLUTIONS