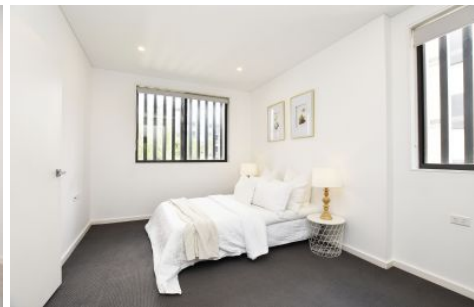




FORTUNE CONNEX

PROPERTY SOLUTIONS



43/10-14 Hazlewood Place Epping NSW

2 2 1

Nestled within the exclusive 'Epping Grove' complex, this modern and stylish two-bedroom apartment offer the perfect blend of comfort, convenience, and quality living. Positioned in a peaceful cul-de-sac, yet just a short stroll to Epping Station, village shops, cafes, and top-rated schools, this is an exceptional opportunity for young professionals, families, or savvy investors.

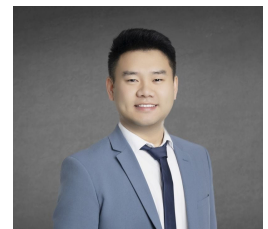
- Sleek stone benchtops, gas kitchens with quality appliances, and stylish floor-to-ceiling tiled bathrooms.
- Open-plan living and dining areas with high ceilings, large windows, and seamless indoor-outdoor flow.
- Large balconies or terraces, perfect for al fresco dining and entertaining.
- Ducted air-conditioning, European-style laundry, video

[For full version visit the website](https://www.fortuneconnex.com.au)

Type : Apartment
Price : \$ 835,000
Land Size : 119 sqm
View : <https://www.fortuneconnex.com.au/sale/nsw/northern-suburbs/epping/residential/apartment/8256344>



Ethan(Guang) Li
0404 899 545



Jensen(Jixiang) He
0424666089



Disclaimer: All information contained herein is gathered from sources we deem to be reliable. However, we cannot guarantee its accuracy, and interested persons should rely on their own enquiries.