



FORTUNE CONNEX

PROPERTY SOLUTIONS



26 Lindisfarne Crescent Carlingford NSW

6 3 2

Situated in a rarely offered peaceful street, this great two-storey family home features stunning contemporary living with QUALITY fixtures and fittings and is sure to impress.

Features include:

- * Six generously sized bedrooms with built-ins, five bedrooms upstairs, and the 6th bedroom downstairs
- * Formal lounge, family, and dining areas leading to the covered alfresco
- * Stunning kitchen with gas cooking
- * Three modern bathrooms, with the main bathroom featuring a spa
- * Fully landscaped private and secure backyard
- * Large lock-up garage with storage space

Type : House

Price : \$ 1,930,000

View : <https://www.fortuneconnex.com.au/sale/nsw/north-hern-suburbs/carlingford/residential/house/7969611>



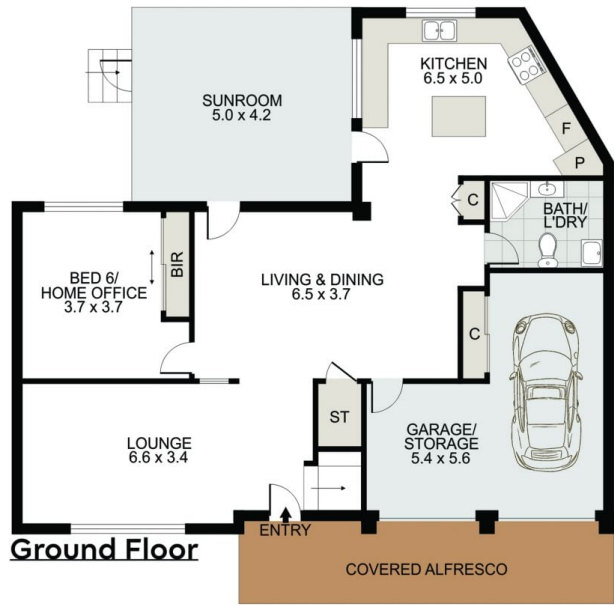
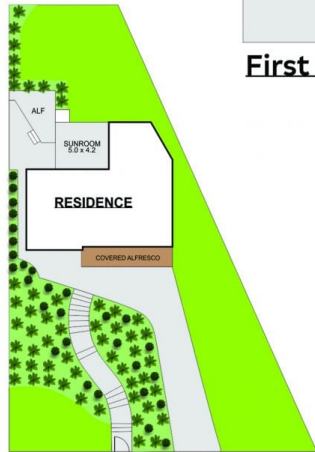
Sophia Su
0480 100 267



Jack Lin
0430097599

[For full version visit the website](https://www.fortuneconnex.com.au)

<https://www.fortuneconnex.com.au>



26 Lindisfrane Crescent, Carlingford



FORTUNE CONNEX
PROPERTY SOLUTIONS

Scale in metres. Indicative only. Dimensions are approximate. All information contained herein is gathered from sources we believe to be reliable. However we cannot guarantee its accuracy and interested persons should rely on their own enquiries