



FORTUNE CONNEX

PROPERTY SOLUTIONS



34 Coromandel Street Marsden Park NSW

5 4 2

Fortune Connex proudly presents this amazing architecturally designed and custom-built double story home.

From the moment you walk in the front door you will immediately be impressed by details and high-quality finishes throughout. Located in the highly sought after street, this Masterpiece & Contemporary Style family residence with perfect details and has been designed to provide an immensely relaxing indoor/outdoor lifestyle.

Property Features:

- * 2.7m ceiling high throughout the house, both for ground floor and first floor
- * Open plan living with its generous size and well-planned

[For full version visit the website](https://www.fortuneconnex.com.au)

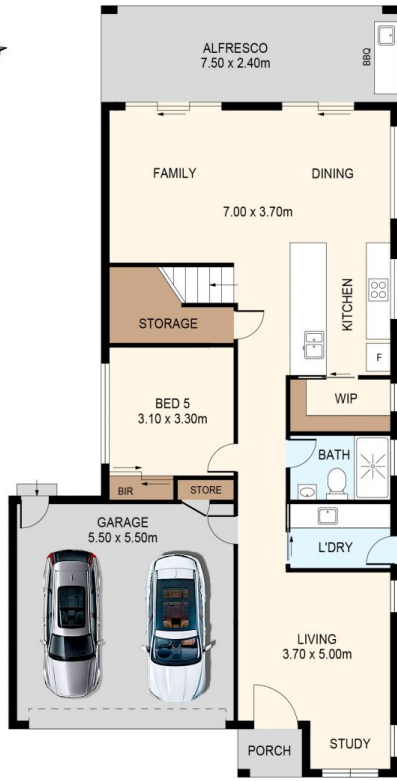
Type : House
Price : \$ 1,338,000
Land Size : 327.6 sqm
View : <https://www.fortuneconnex.com.au/sale/nsw/western-sydney/marsden-park/residential/house/7703528>



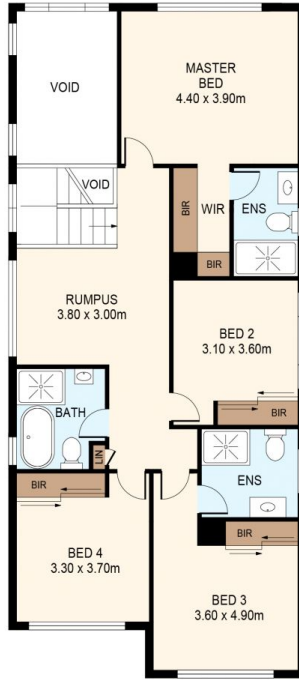
Sophia Su
0480 100 267



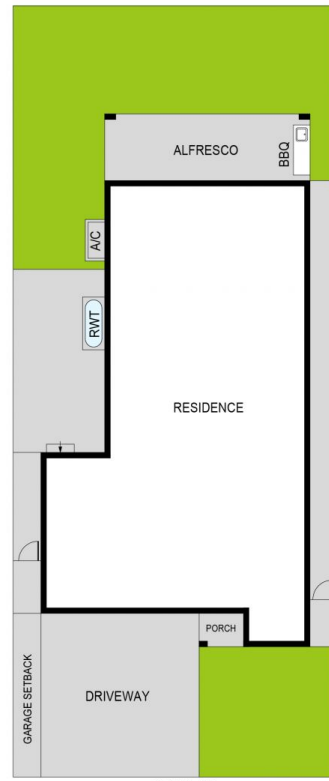
Robin Yan
0451 787 774



GROUND FLOOR



FIRST FLOOR



SITE PLAN
(NOT TO SCALE)



DISCLAIMER: THIS IS FOR ILLUSTRATIVE PURPOSES ONLY.
ALL DIMENSIONS ARE APPROXIMATE AND IT DOES NOT
CONSTITUTE PART OF ANY LEGAL DOCUMENTS.

ADDRESS:

34 COROMANDEL STREET, MARSDEN PARK